



Table Top Steam Sterilizers
Matachana SNA30

Super efficient. Increased usability. More than you expect.

The new table top sterilizer SNA30 is built to offer more from all that counts in daily tasks within Infection Control:

Super efficient, thanks to its capacity and short cycle times, including excellent load dryness.

More flexibility, due to a greater tray loading surface and specially developed racks.

Increased usability, through a high-end touchscreen and an intuitive, simple menu structure, including its ergonomic design.

Time to add a plus to your daily sterilization process!



Technical Data

Sterilizer	
Working temperature:	From +5 °C to +40 °C
Working relative humidity:	Max. RH 80% up to 31°C, linearly decreasing to 50% at 40 °C
Storage temperature / rel. humidity:	-20 °C to +60 °C/0-90% (with empty tanks)
Max altitude:	3000m asl
Min. atmospheric pressure:	0.6 barA
Overall dimensions:	W:490mm/H:452mm/D:616mm, W:19.3"/H:17.8"/D:24.25"
Min. space required:	W:590mm/H:470mm/D:616mm, W:23.22"/H:18.5"/D:24.25"
Total chamber volume:	~28 l, Ø:279.4mm/D:456.8 mm ~7.4 gal, Ø:11"/D:18"
Chamber usable space:	~18.5 l / 4.9 gal
Weight empty:	105.8lbs (48kg)
Max. weight (fully loaded):	146.6lbs (66.5kg)
Weight per support area:	39,2 kN/m ²
Max. heat output:	3000 KJoule/hour
HEPA filter:	0.3 µm
Sterilizer chamber	
Pressure safety valve:	2.6 bar
Safety thermostats:	180 °C
Steam generator	
Pressure safety valve:	5 bar
Safety thermostats:	230 °C
Distilled or demineralized water	
Water quality:	Conductivity < 10µS/cm
Average water consumption:	0.65 to 0.75 liters/cycle 0.17 to 0.2 gal/cycle
Tank volume:	Clean water 6.4 liters, 1.7 gal Min. water charge (clean water): 1.1 liters, 0.29 gal Used water 6.7 liters, 1.77 gal
External water supply	
Pressure:	Min. 2 bar – max. 8.6 bar
Flow:	Min. 0.25 – max 0.5 l/min

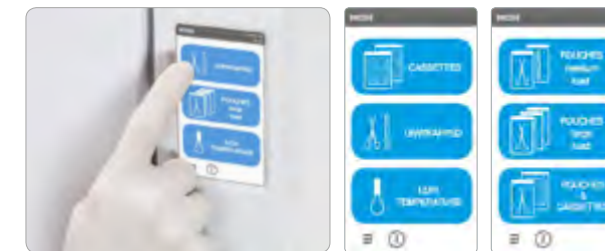
Main features

Usability: user centered touch screens

The new SNA30 comes with an easy to use high resolution touch screen and an intuitive menu structure that allows quick and reliable handling. Traceability and easy communication with other devices are guaranteed via two USB ports. Optionally, an Ethernet port for connectivity can be added.

It provides the possibility to customize the start of the selected cycle in terms of date and time. Both cycle initializing and completion are identified.

Fitted with a back-up internal memory with up to 200 cycles, enabling to store the cycles in an external USB pen drive.



Ergonomic design

The new SNA30 design is perfect for easy cleaning and maintenance, as well as for simple operation.

Water solution

Double water tank system (used and clean water) to ensure a correct steam quality and correct achievement of the sterilization conditions. Clean water tank includes a conductivity sensor to control the water quality. Optionally, an automatic water filling system can be incorporated.

Drying performance

Excellent closed-door drying thanks to patented vacuum-assisted drying technology.

Productivity

The new SNA30 offers fast cycles for small and large loads, full flexibility on cycle selection and an overall reducing of cycle time.

	Sterilization Programs	Sterilization Temperature	Sterilization Time	Total Cycle Duration (incl. drying)		Maximum Load Weight
				220 V	110 V	
1	Unwrapped	270 °F / 132 °C	4 min	35 min	43 min	18 lbs
2	Pouches Medium Load	270 °F / 132 °C	4 min	45 min	53 min	3 lbs
3	Pouches Large Load	270 °F / 132 °C	4 min	51 min	58 min	6 lbs
4	Low Temperature	250 °F / 121 °C	30 min	76 min	80 min	5 lbs & 4.4 lbs



Innovation is the way forward

Since the company's foundation more than 50 years ago, our mission has been to provide the best service, bringing our knowledge and field experience to our customers to facilitate their daily work, allowing them to be efficient in the production whereas keeping rigorously the quality.

MATACHANA has a worldwide presence, with offices based in Spain, France, Germany, Italy, United States, Argentina and Malaysia, or through its distributors in over 110 countries.

In MATACHANA we are aware that Training and Service contribute decisively to achieve customer satisfaction. For this reason, we have always invested in the development of these two areas of activity, which enables a direct contact with customers and help us to develop together a continuous improvement process.

Technical Engineering Support

An assistance provided by engineers, highly skilled expert technicians and support staff, all committed to ensure the proper equipment operation and condition.

MIEC, training center

As we feel seriously committed and liable for achieving the optimum operation from the MATACHANA equipment, we invest in the training of future users, proposing a service of educational courses to all our customers on a regular basis and in the 5 continents.

Environmentally friendly

The devices are designed and manufactured using the latest technologies on the market to achieve the best results in terms of energy savings and reduction in water consumption. Our Production Center located in Castelldefels (Barcelona) complies with the ISO 14001 Environmental Management System and ISO 50001 Energy Management.

Quality

The MATACHANA devices are developed, manufactured and tested within a strict quality control according to the international Standards ISO 9001 and EN ISO 13485 for the quality management of medical devices.